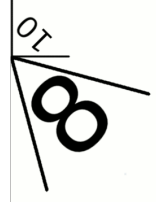


RUNNING LARK'S HEAD OVERHAND



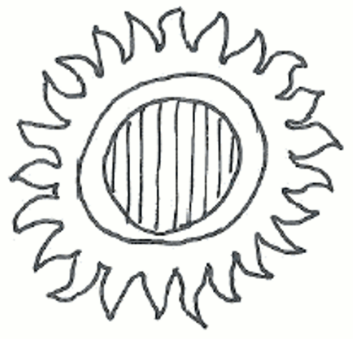
RUNNING BOWLINE



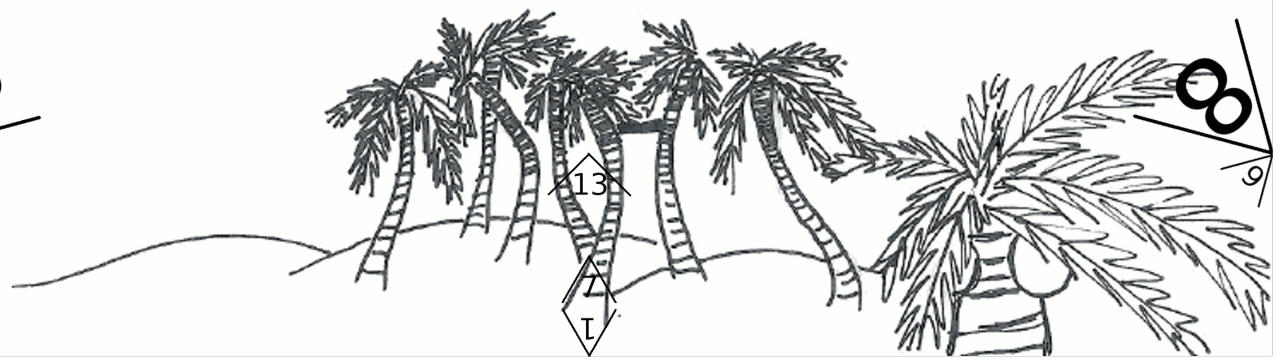
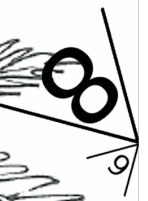
Dead Man's Quest?

14: # to # (or hat) your boat (or hat) to the Puzzle Crew and tell them your answer; (or wear) your boat (or hat) to the

Steps 1-13: match # to # and fold. Step 14: Pull out the ends form a boat (or hat). Step 15: Sail

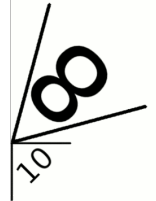


11

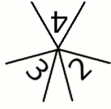


13

1



4



2

3

7

6

9

10

8

9

11

12

3